

2021 ESPLOST FORUM

NEW ELEMENTARY SCHOOL

Combining Dawson Elementary School
and St. Mary's Road Magnet Academy



History of the Schools

DAWSON ELEMENTARY SCHOOL

- Dawson Elementary was built in 1960 on 34 acres with 32 classrooms.
- Matthew Rivers was appointed the first principal May 15, 1961.
- The school was occupied on May 11, 1961.
- There were 150 students transferred from Forrest Road and St. James.
- The 1961-62 school year started with a total of 205 students.

ST. MARY'S MAGNET ACADEMY

- St. Mary's Elementary was built in 1956 on 19 acres with 29 classrooms.
- Charles A. Parker was appointed principal March 11, 1957.
- The school was occupied on April 18, 1957.
- There was a fire at the school in 1971.
- Funding approved for Magnet Program on June 26, 1992.



Rationale for Consolidation

Improved Efficiency

- Energy conservation
- Reduces redundancy of personnel, programs and services
- Safer traffic ingress and egress (less congestion on St. Mary's Road and concerns for walkers along North Star Drive)
- Bus transportation

Enhanced Quality and Curricular Programming

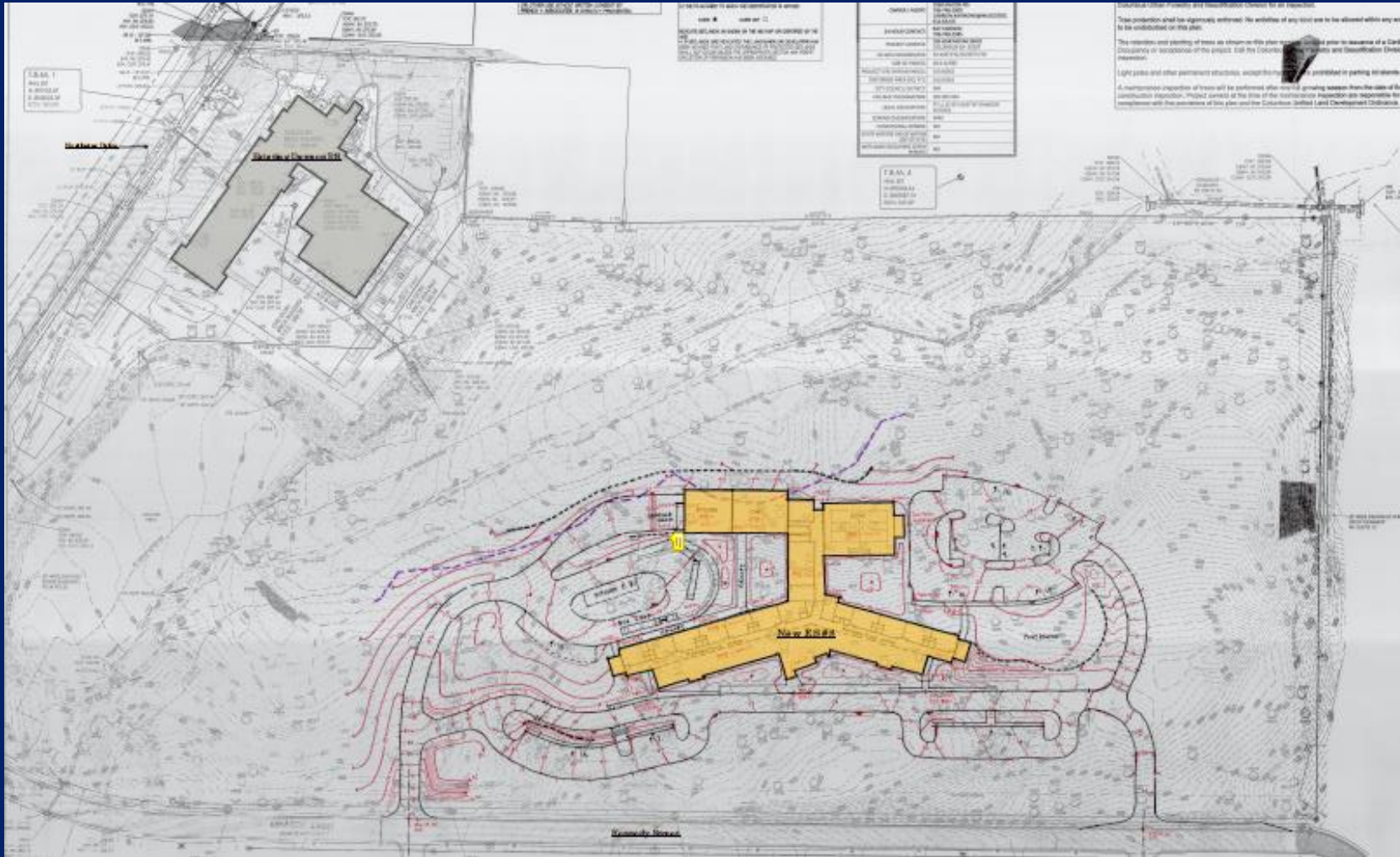
- New facility, furniture, technology, equipment
- Larger commons areas (cafeteria, gym, music rooms, etc.)
- Review/revise magnet status

Reduced Cost to District and Taxpayers

- Building site currently owned by the District
- Estimated operational savings: \$500,000 per year



Building Location



New School Rendering - Front



New School Rendering - Back



Building Specifications

Cost: \$25 Million (E-SPLOST funding)

Student Capacity: 750 students

Total Square Feet: 106,833 s.f.

Number of Stories: 3

Number of Parking Spaces: 131

Classroom Counts: (46 + Music + Art + PE)

Pre-K (750 s.f.) - 4

Kindergarten (750 s.f.) - 6

First Grade (750 s.f.) - 6

Second Grade (750 s.f.) - 5

Third Grade (750 s.f.) - 5

Fourth Grade (750 s.f.) - 5

Fifth Grade (750 s.f.) - 5

SP_ED (6 @ 750 s.f. & 2 @ 375 s.f.) - 7

Music (1,135 s.f.)

Art (1,044 s.f.)

Gym (6,735 s.f. w/132 bleacher seats)

Cafeteria (4,034 s.f. w/room for 350 person bench seating)

Media Center (5,620 s.f.)



Design & Construction Milestone Schedule

- Design / Construction Documents: December 2021
- Final Ga DOE Approval: January 2022
- Bidding & Negotiation: January - February 2022
- Award Construction Contract: March 2022
- Construction: March 2022 - May 2023
- Completion of Construction: June 1, 2023
- Move-in: June - July 2023
- School Opens: August 2023



Staffing

- No loss of jobs
- Teachers follow students
- Additional ancillary personnel (administration, support staff) reassigned based upon:
 - Volunteer
 - Seniority within the District



Academic/Curriculum Programming

MCSD will provide the local and state aligned academic/curriculum program offerings that our elementary schools are afforded. These include:

- All core content courses are aligned to the Georgia Standards of Excellence
 - English Language Arts
 - Science
 - Mathematics
 - Social Studies
- Art, Music and Physical Education
- Special Education services for students who meet eligibility requirements
- Pre-K for students who will be 4 years old on or before September 1st
- Gifted services for K-5 students who meet eligibility will be served using a resource model through St. Elmo Center for the Gifted

St. Mary's Road, Video and Technology Magnet, will continue to serve all current magnet students. The status of the program will be re-evaluated by the new elementary school administration, staff and stakeholders.



Creating “We” – Proposed Continuity Plan

- Starting now to unite school and climate
- Establishing Blended Wellness Programs now
- Combining of Parental Programs - PTSA coming together - Planning events
- Examples of partnering the two schools through intentionality of joint activities in SY2022-23:
 - Winter Concert
 - Awards Program
 - Grade Celebrations
 - Kindness Challenge - Together we Build
 - Theme nights/days
 - Mixing up the teams on Field Day
 - Elementary School Governing Officers



Naming of New School

Board Policy

- Ms. Naomi Buckner, District 4 representative will develop a committee of representative stakeholders to submit non-binding recommendations
- Non-binding recommendations considered by the full Board of Education (BoE)
- Official vote of BoE memorializes name



Disposition of St. Mary's and Dawson

- Superintendent makes recommendation to declare as surplus properties
- Board of Education considers recommendation
- Possible Future Options/Considerations:
 - List properties for sale
 - Demolish buildings and list for sale

